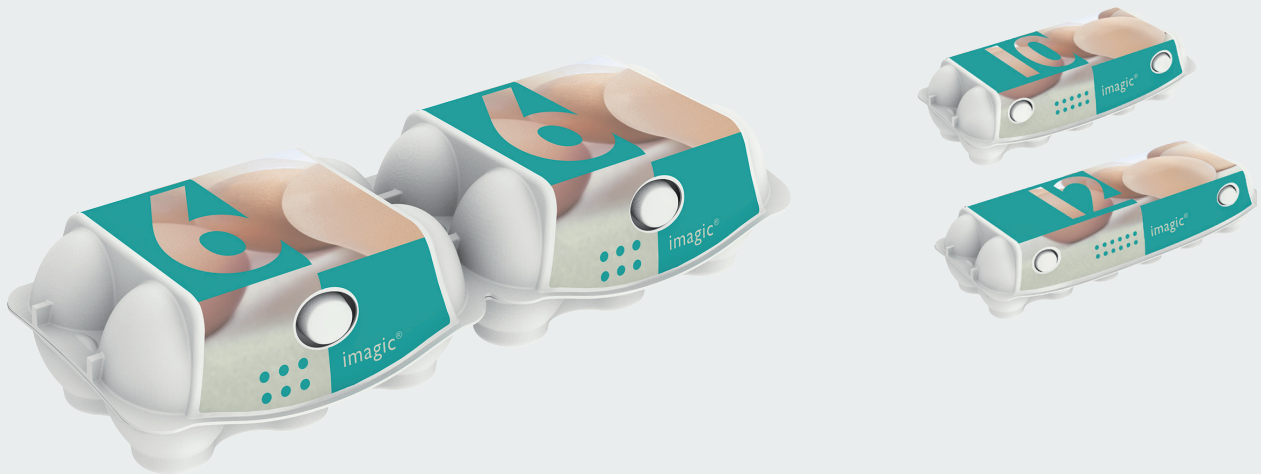


2x6 imagic® E9812

Product range

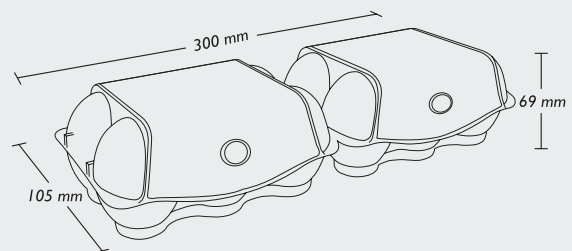


Egg sizes

Our E9812 egg cell is constructed for weight classes S, M, L

Product dimensions (closed)

Width: 105 mm
Height: 69 mm
Length: 300 mm



Colours

Standard colours

00 white

51 sunflower

08 green

11 yellow

06 champagne

68 grass

20 grey

2x6 imagic® E9812

Average product weight

With label: 53.2 g
 With direct print: 50.9 g

Quantities

Pallet: 44 one way 79 one way UK
 Units per bundle: 56 62
 Units per pallet: 3,136 3,968

Machine settings

Moba Code: HA 2603

Gripper Set No.: 900
 Denester Settings

L	G	J	II	I2
15	25	6	13	36

Sanovo Code (Staalkat): HA-033

Disclaimer

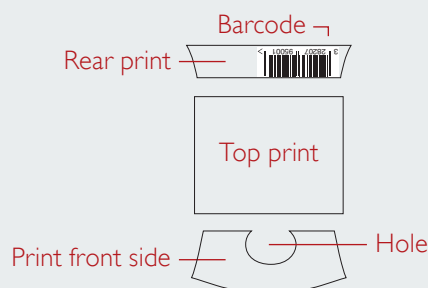
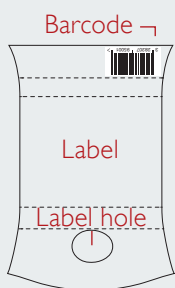
Please consult MOBA and SANOVO for confirmation of the machine settings

Decorations

Label: CMYK and up to 2 spot colours on request

Direct print: Top: 6-colour
 Front and rear: 4-colour

Inlid print: I-colour black



Modules for labels and print areas can be downloaded at www.hartmann-packaging.com

Certification



Certifications (optional)

